



AMERICAN
STRUCTUREPOINT
INC.



LICKING COUNTY, OHIO HANOVER WATERLINE EXTENSION – PHASE 1

Recent Progress – (5-18-26 to 5-22-26)

- 12” Water Main along MARNE Rd. installed to near BOWLING GREEN CEMETARY Rd. install continues to the East with as much pipe bored underground as possible.
- 12” Water Main in MEADOW Dr. installed from North end to near VALLEY Blvd NW.
- RESTORATION crews of Asphalt and Seed & Straw 3 parcels up DARLA and cleaned up lawns and stone backfill in street as much as possible before the holiday weekend and work rained out on Friday morning.
- RESTORATION crew for Asphalt on BOLEN from ARTHUR Ave. to the East
- Tie-in of 12”x6” tee at NEW HOME and W HIGH Streets.

Week Look Ahead – (5-26-26 to 6-6-26)

- ***Miller Pipeline 2 Pavement Repair crews to expedite improving conditions.**
 - o Crew 1 continues northward up DARLA;
 - o Crew 2 continues eastward on BOLEN toward LICKING VALLEY Rd. intersection.
- **12” Mainline crew on MEADOW trenching in street to W HIGH Street.**
WHEN school for students ends May 29th expect this crew to continue working alongside the South side of W HIGH ST. toward the Hainsview intersection in coming weeks. Boring pipe underground as much as able.
- 12” Mainline Crew on MARNE continues working Eastward. Boring pipe underground as much as able.

Traffic Impacts.

1. Meadow = local traffic only, be aware when driving and crews will get you through
2. Bolen = 1-lane, 2-way traffic around pavement repair crews
3. Marne = 1-lane, 2-way traffic with flaggers

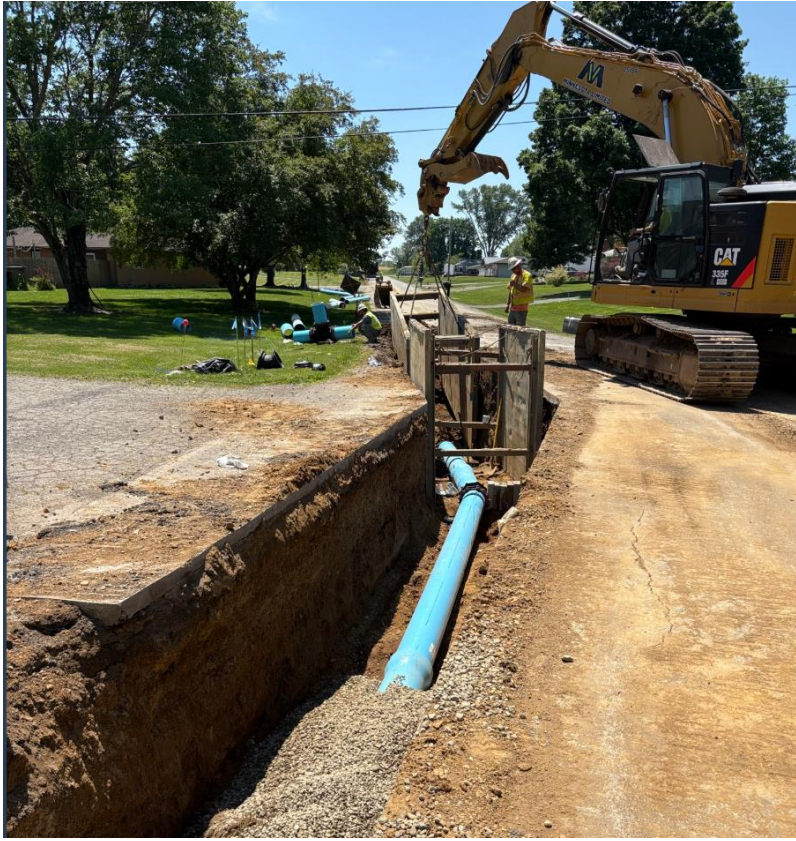
Approximate project complete: Near 72% calendar, 54.0% of pipe installation

***American Structurepoint Inc. - On behalf of the Licking County project please reach out to Field Inspection Contacts for project related items for the most rapid assistance, a project inspector is on-site to help facilitate, including concerns within Village and Township areas, please reach out as needed.

ON-SITE Inspector = Mark Campbell - 740-566-2021 - mcampbell@structurepoint.com

Sr. Project Representative = Jacob Brooks - 330-720-1505 - jbrooks@structurepoint.com

Trench work down E side of MEADOW for 12" Watermain



Process of pavement repairs on DARLA



DARLA restoration status for Memorial Day weekend



Typical hydrant install on 12" Watermain with a 12"x6" tee. Tee, valve, hydrant block support to native soils.





AMERICAN
STRUCTUREPOINT
INC.



2550 Corporate Exchange Ct., Ste. 400 | Columbus, Ohio 43221
TEL: 614.222.2226
www.structurepoint.com

CONSTRUCTION DOCUMENTS
FOR
HANOVER WATER EXTENSION
PHASE 1
CITY OF HANOVER, LICKING COUNTY, OHIO
OVERALL PLAN

DESCRIPTION

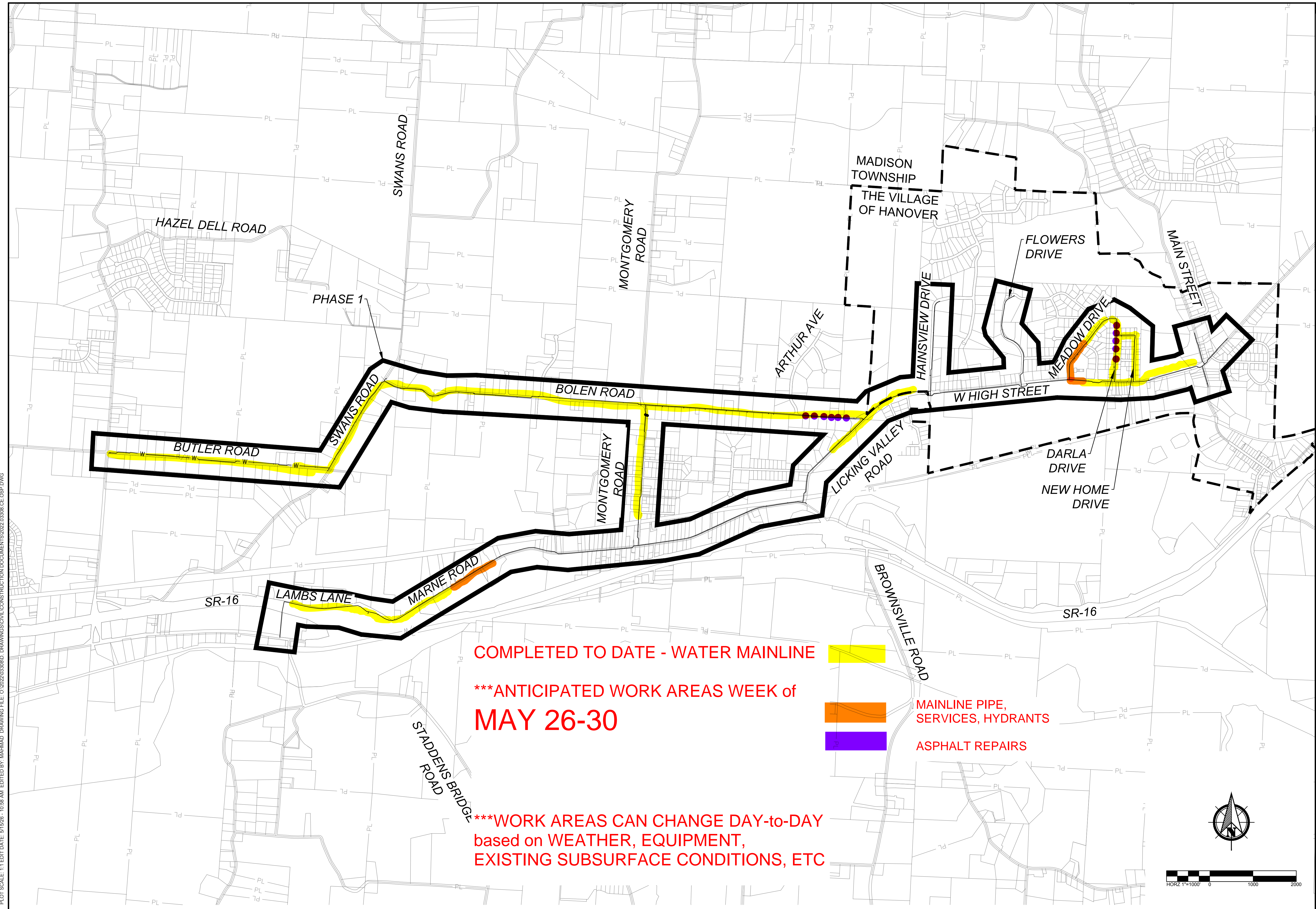
SHEET NO.

DATE

REVISIONS

DATE: 5/15/2026
DRAWN BY: MNA
CHECKED BY: BJM
JOB NUMBER: 2022.03308

C100



COMPLETED TO DATE - WATER MAINLINE

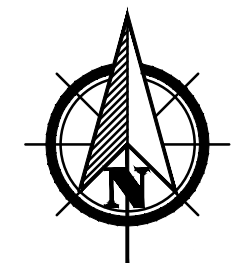
***ANTICIPATED WORK AREAS WEEK of
MAY 26-30

***WORK AREAS CAN CHANGE DAY-to-DAY
based on WEATHER, EQUIPMENT,
EXISTING SUBSURFACE CONDITIONS, ETC



MAINLINE PIPE,
SERVICES, HYDRANTS

ASPHALT REPAIRS



PLOT SCALE: 1:1 EDIT DATE: 5/15/26 - 10:58 AM EDITED BY: MAHMOUD DRAWING FILE: C:\2022\03308.D DRAWINGS\CIVIL\CONSTRUCTION\DOCUMENTS\2022.03308_CE_CSP.DWG



AMERICAN
STRUCTUREPOINT
INC.



2550 Corporate Exchange Dr., Ste. 400 | Columbus, Ohio 43221
TEL: 614.222.2226
www.structurepoint.com

CONSTRUCTION DOCUMENTS
FOR
HANOVER WATER EXTENSION
PHASE 1
CITY OF HANOVER, LICKING COUNTY, OHIO
OVERALL PLAN

REVISIONS DATE SHEET NO. DESCRIPTION

REVISIONS	DATE	SHEET NO.	DESCRIPTION

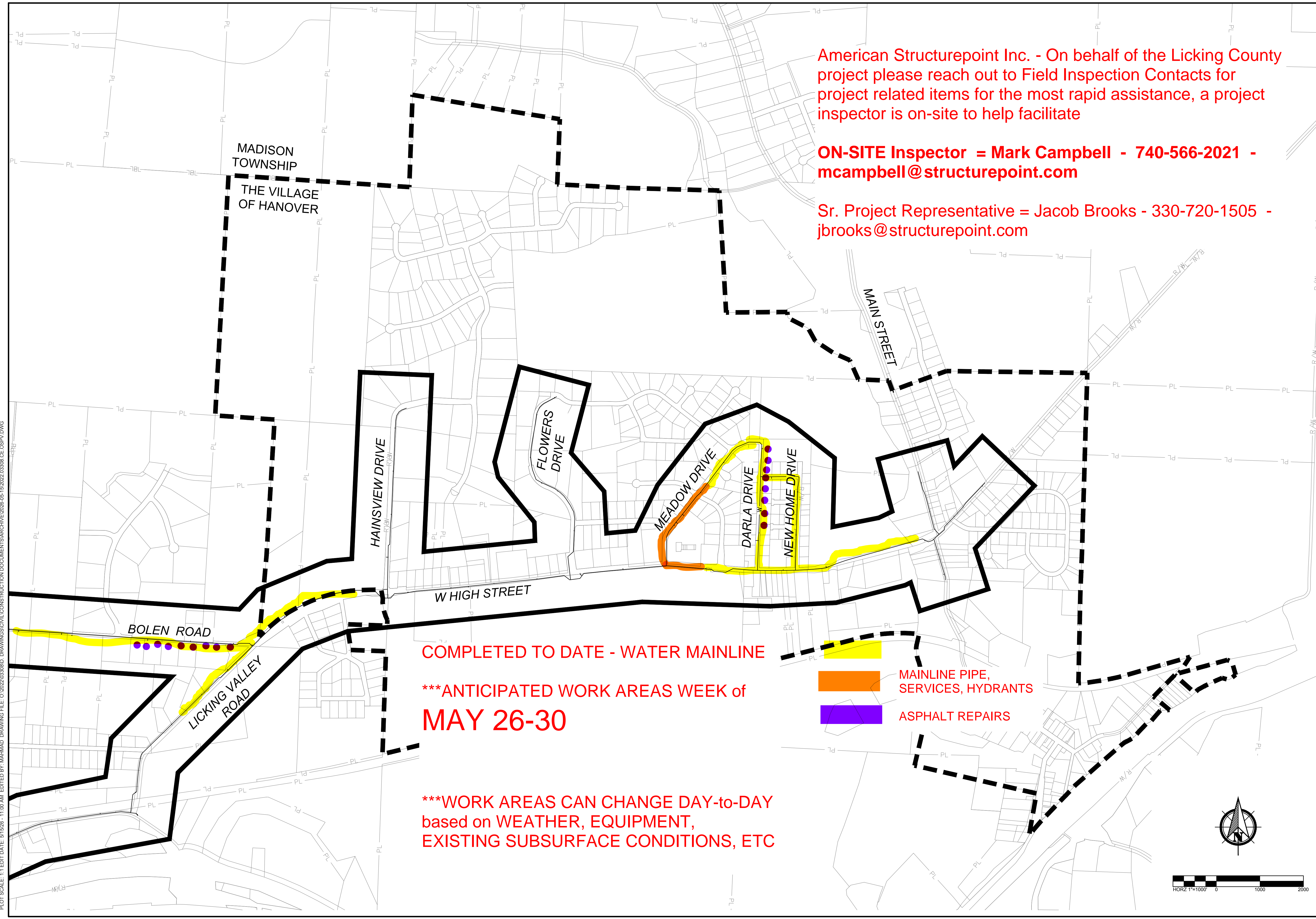
DATE:	5/15/2026
DRAWN BY:	MNA
CHECKED BY:	BJM
JOB NUMBER:	2022.03308

C100

American Structurepoint Inc. - On behalf of the Licking County project please reach out to Field Inspection Contacts for project related items for the most rapid assistance, a project inspector is on-site to help facilitate

ON-SITE Inspector = Mark Campbell - 740-566-2021 - mcampbell@structurepoint.com

Sr. Project Representative = Jacob Brooks - 330-720-1505 - jbrooks@structurepoint.com



COMPLETED TO DATE - WATER MAINLINE

*****ANTICIPATED WORK AREAS WEEK OF
MAY 26-30**

*****WORK AREAS CAN CHANGE DAY-to-DAY
based on WEATHER, EQUIPMENT,
EXISTING SUBSURFACE CONDITIONS, ETC**

-  MAINLINE PIPE, SERVICES, HYDRANTS
-  ASPHALT REPAIRS

PLOT SCALE: 1:1 EDIT DATE: 5/15/26 - 11:00 AM EDITED BY: MAHMOUD DRAWING FILE: C:\2022\03308.D DRAWINGS\CIVIL\CONSTRUCTION\DOCUMENTS\ARCHIVE\2026-05-15\2022.03308.CE.OSPV.DWG